

CAPTAIN COQK

NEWSLETTER OF THE
CHRISTCHURCH (NZ) PHILATELIC SOCIETY, INC

ISSN 0122 – 9813

Num 783 (Vol 45 No 3)

April, 2017

1949 Vanguard, Yours For \$67,850

On March 16, Mowbray's held a public auction in Wellington of Philatelic Rarities with the cover item, lot 54, being the 3d value from unissued Royal Visit from 1949. This stamp is known to most collectors as the "Vanguard" stamp due to the design showing the HMS Vanguard, the ship that was carrying the royal family on their overseas tour. Ultimately the tour was cancelled due to the declining health of George VI.



A set of four stamps for New Zealand was produced and stocks were printed ready to issue in anticipation of the tour's arrival in New Zealand. Due to the tour cancellation the entire issue, barring one sheet of each value retained by the Post Office, was later destroyed.

Subsequently, over time it appeared that a small quantity, seven to date, was out in the public domain. Anecdotally, some were supposed to have been saved from destruction after they had been caught in the door of the furnace.

The above example is considered the finest in private hands and was last sold by Stanley Gibbons Australia in 1993. In the recent March auction, it was listed with an estimate of \$25,000 and after some spirited bidding was knocked down for \$59,000, or \$67,850 including bidder's premium.

Stephen Jones

1931 New Zealand Stamp Exhibition Souvenir

I recently came across this souvenir sheet from a stamp exhibition held by the Auckland Philatelic Society in 1931. The Exhibition opened on Friday, September 18 and ran until the following Friday. The sheet measures 267 x 151 and is printed on glossy white paper. It is not a souvenir sheet I have seen before and would probably be New Zealand's earliest philatelic souvenir.



SOUVENIR OF THE FIRST EXHIBITION HELD UNDER THE AUSPICES OF THE AUCKLAND PHILATELIC SOCIETY (Incorp.).
IN THE HALL OF INDUSTRIES, QUEEN'S ARCADE, AUCKLAND.
18th September, 1931, Auckland's 90th Birthday.

A search of Papers Past on the internet found the following entry, titled "Auckland Exhibition" in that day's edition of the Auckland Star:

"I can think of no better means of young people learning geography than taking a keen interest in stamps" said Mr AJ Entrican, deputy-Mayor, in opening the Auckland Philatelic Society's exhibition in the Hall of Industries, this afternoon. The exhibition will remain open until Friday of next week.

After giving a brief outline of the history of the postage stamp, Mr Entrican said that he was pleased the society was making a special effort to get young people interested in stamp collecting. Many stamps were regarded as works of art, and numerous issues were certainly a stimulus to artists to excel in their productions. Stamp collecting was splendid hobby for men who wanted something for a pastime when they had retired from business. He hoped the exhibition would be successful in every way.

The president of the society, Mr FW Davie, said that the society was pleased to be able to arrange the exhibition, and he felt certain that their efforts would be appreciated by the public. All the stamps have been specially mounted for the occasion, and that had meant much work for the members of the society. Stamp collecting was one of the few hobbies that would return something to the collector for their pains should he tire of it and later take it up again, as stamps increased in value according to their age.

The following day's edition had two short comments on the exhibition including descriptions of two items on display. One a letter to the US commandeered from the captured German U-boat "Bremen" shortly after the war broke out, and a letter from Russia which, due to the inflation at the time, was stuck to 16 sheets of 50 stamps to cover the registration rate.

Stephen Jones

SOCIETY PAGE

PROGRAMME

APRIL 3 POSTAL HISTORY GROUP

APRIL 11 SOCIETY MEETING **AGM & Presidents Night**
WWI themed talk

AGM**AGM**AGM**AGM

Yes, it's the 2016 AGM, come along and be a part of it, join the committee and help out, you know you want to!

This will be followed by a talk given by our President on neutrality, the Dutch and WWI

APRIL 18 LIBRARY NIGHT Open for all members

MAY 1 POSTAL HISTORY GROUP

MAY 9 SOCIETY MEETING
Annual Competition

MAY 16 LIBRARY NIGHT Open for all members

MAY 23 POSTCARD GROUP

All meetings are held at the Philatelic Centre, 67 Mandeville St, Riccarton, and commence at 7.30 pm. (Library night closes at 10 pm)

SOCIETY ADDRESS:

PO Box 9246, Tower Junction, Christchurch 8149

(website) www.cps.gen.nz

(emails) Use the "Contact" facility in the website

SOCIETY OFFICERS:

<i>Patron</i>	Jeff Long	<i>President</i>	Paul van Herpt
<i>Vice President</i>	Sue Claridge	<i>Secretary</i>	Vacant
<i>Treasurer</i>	Karen Jeffrey	<i>Library</i>	Robert Duns
<i>Editor</i>	Stephen Jones	<i>Exchange Supt</i>	Tony Stockley
<i>Collections Convenor</i>	Paul Clark	<i>Immed Past Pres</i>	Robert Duns
<i>Web Master</i>	Murray Taege		

Christchurch (NZ) Philatelic Society (Inc) Subscription Rates

The annual subscription to the Society is \$60.00. A \$10.00 discount may be deducted if paid by March 31st (or on application for membership) Where both husband and wife are members but require only one *CAPTAIN COQK* newsletter to be sent, a combined subscription of \$90.00 is charged, \$15.00 discount allowed. Additional postage is charged to cover the extra cost of posting to overseas addresses. Overseas postage rates are as follows: Australia & South Pacific \$13.20 Rest of the world \$18.70 (Economy rate discontinued)

The view expressed in this issue of *CAPTAIN COQK* are not necessarily those of the Christchurch (NZ) Philatelic Society (Inc) but are simply those of the respective authors

The newsletter is published 11 times a year by the Christchurch (NZ) Philatelic Society (Inc), PO Box 29, Christchurch, 8140, New Zealand The Copyright of articles remains with the original Author. Articles may be reproduced only with the permission of the Author and CPS. However, short quotes may be used provided *CAPTAIN COQK* is acknowledged

1940's Christchurch Gas Company Cinderella

The collecting field of Cinderellas is probably one of the few left where there is a good chance of coming across an item "new" to the collecting fraternity, and even with New Zealand, there are still surprises to be found. The following item, produced for the Christchurch Gas Company, recently turned up with a group of other cinderellas from the 1940's and 50's and probably dates from around that period. Printed in the USA by Brown & Bigelow in St Paul, Minnesota, it features an image of the company offices, viewed through willow trees and "..... near the beautiful Avon". Interestingly the image used is virtually identical to that of a postcard, probably dating from the 1910's, of the company's offices on Worcester Street. It looks like a little bit of artistic licence was used here for the label design.

Gas.—The first instance of the use of gas in any of the houses in Christchurch was we believe to be found in Coker's Hotel, on Thursday night, the branches and some of the minor fittings having been laid on to his premises. To night, however, we hear that several houses will display the new acquisition—Ruddenkian's Hotel amongst the number. The Gas Company have, we see, been busy in affixing some handsome stars, &c., on the Town Hall and other buildings, to be lit up at dark to-night.
—Press, Dec. 24.



The Christchurch Gas Company was formed in 1862 as, according to a notice in the Press on November 22, "The City of Christchurch attained such dimensions and density, that it appears capable of supporting a Gas Factory" with ".... advantages of coal gas, both for illuminative and cooking purposes, are too generally known to require any particular commendation". The notice was to advertise the sale of 1000 shares in the company at £10 each, with an expected dividend return of 12%. Good money if you can get it.



Work began in 1863 and by December, 1864 the first properties were using gas to provide lighting for the home. Subsequently large areas of the central city were reticulated with the network expanding out to St Alban's and Riccarton by the end of the 19th century. The amount of new connections looks to have begun to plateau at around 25,000 in 1928, by which time increasing use of electricity resulted in the demand for gas tapering off.

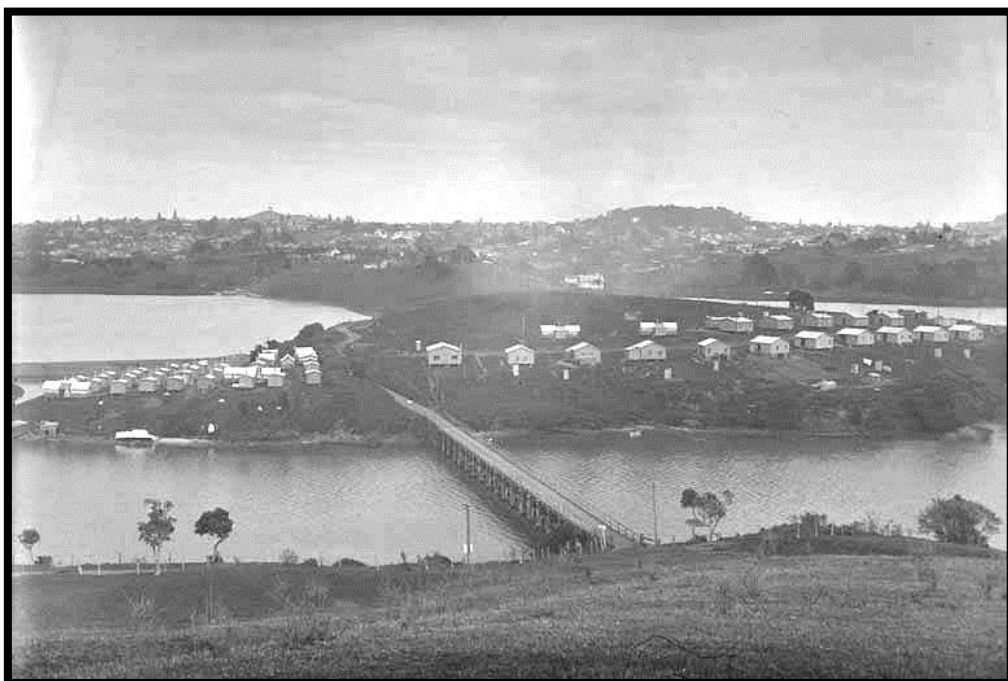
Stephen Jones

1926 Purewa Camp

In Auckland during the 1920's, an 800m long tunnel was built as part of the Westfield Deviation linking Auckland central city to Westfield near Otahuhu. Due to the size of the workforce, a work camp was setup and according to Startup, the post office is recorded as operating from February 26, 1926, through to June 13, 1931. The following cover is a nice registered tri colour franking sent from the camp to Germany and date stamped June 4, 1926. The envelope has the added bonus of the printed Esperanto themed cachet.



According to the Evening Post of February 12, 1926, there were about 400 men employed in the construction of the deviation with work on the tunnel being carried out over three shifts. The tunnel workers were primarily British, along with a mixture of Italians and Dalmatians working on the cuttings approaching the tunnel entrances. Apparently this particular project was viewed favourably by the workers as ".....it was long since they have had a job so close to the attractions of a town" The deviation opened for south bound goods traffic on September 1, 1929, with two way traffic including passengers opening on May 11, 1930.



Purewa Camp (image from Remuera Heritage Newsletter 12/09/2013)

Stephen Jones

CHRISTCHURCH (NZ) PHILATELIC SOCIETY INC

Notice is given for the 106th Annual General Meeting to be held on Tuesday 11 April 2017 with an agenda as below to receive reports and elect officers. No specific remits have been received.

AGENDA 106th ANNUAL GENERAL MEETING TO BE HELD ON TUESDAY 11th APRIL 2017 AT 7.30pm AT THE PHILATELIC CENTRE, 67 MANDEVILLE STREET

WELCOME:
APOLOGIES:
MINUTES OF THE 105th ANNUAL GENERAL MEETING:
MATTERS ARISING:

CORRESPONDENCE: Paul Wales - Literature Award results (covered in General Business)

PRESIDENT'S REPORT:
STATEMENT OF ACCOUNTS:
FINANCIAL REVIEW PANEL'S REPORT:

ELECTION OF OFFICERS:	Patron	President
	Vice-President	Treasurer
	Secretary	Librarian
	Exchange Superintendent	Newsletter Editor
	Collections Convenor	Committee positions (x4)

GENERAL BUSINESS: Officer's Expenses
Annual Presentations
The Anderson Cup, awarded for best talk and display during 2016
The Pim Cup, most popular talk or display on Members nights
Literature Award, for best Newsletter article in 2016
Items from the floor

The meeting will be followed by the April general meeting, a presentation by the President

MINUTES OF THE 105th ANNUAL GENERAL MEETING HELD 7.30pm ON TUESDAY 12th APRIL 2016 AT THE PHILATELIC CENTRE, 67 MANDEVILLE STREET.

WELCOME: The President Paul v Herpt welcomed 29 members and visitors.

APOLOGIES: Malcolm Westgarth & Tony Stockley. Moved from the chair that these be accepted. Carried.

MINUTES OF THE 104th ANNUAL GENERAL MEETING:

Tabled and moved (P v Herpt/D Reynolds) that as these have been published in the April 2015 Captain Cook, they be taken as read. Carried.

There being no discussion it was moved (P v Herpt/D Reynolds) that these are a true and accurate record last year's AGM. Carried.

MATTERS ARISING: Questioned whether the allocation of \$2,200 for Officers expenses was adequate. Meeting advised that only \$1,300 had been disbursed.

CORRESPONDENCE: e-mail from David Holmes advising results of competition for best article in Captain Coqk during 2015. (Covered under General Business).

PRESIDENT'S REPORT:

Moved from the Chair that the President's Report as published in the April Captain Coqk newsletter be taken as read. Carried.

Noted that President's reference to "ownership" by CPS of the Philatelic Rooms should read "shareholding". Moved (P v Herpt/B Hempseed) that report be received subject to this change. Carried.

FINANCIAL STATEMENT: The Audit Review Panel has advised that the report as circulated in the April edition of Captain Coqk is an accurate summary of the Society's financial transactions and position for the past year. Moved (K Jeffrey/B Hempseed) that this financial statement be accepted and approved. Carried.

ELECTION OF OFFICERS: Moved (D Reynolds/J Sheppard) that the present officers be re-elected en masse. Carried. Officers elected were as follows:

Patron	Jeff Long	President	Paul van Herpt
Vice President	Sue Claridge	Treasurer	Karen Jeffrey
Secretary	Jim Robb	Librarian	Robert Duns
Exchange	Tony Stockley	Capt Coqk Editor	Stephen Jones
Collections Convenor	Paul Clark	Webmaster	Murray Taege

Agreed that the Committee be given power to co-opt up to 3 additional members as required.

Moved (R Duns/J Sheppard) that D Reynolds and M Taege be reappointed as the Audit Review Panel. Carried.

GENERAL BUSINESS:

Officer's Expenses:

Moved (D Reynolds/J Sheppard) that the sum allocated for Officers Expenses remain at \$2,200.00, to be distributed at the discretion of the executive committee. Carried.

Annual Presentations:

President Paul v Herpt announced the following awards for 2015;

The Anderson Cup 2015 winner - Ross Marshall for his presentation "RMS Franconia World Cruises".

The Pim Cup 2015 winner - Neville Howarth for his Cinderella presentations at all three Members' nights during 2015.

Literature Award (for best article in Captain Coqk for previous year judged this year by David Holmes)

2015 winner - Stephen Prest for his June/July article "Invalid Use of Government Life Stamps on Overseas Mail".

Runner up was M Taege for his article on the origins of WWI

Other business:

C Haythornthwaite queried the accuracy of some comments made in *Captain Coqk* by Stephen Jones in a recent article about Owenga (Chatham Islands). It was suggested that she discuss her concerns with the author.

Don Mee asked for clarification on Committee's intentions for remaining CPS collections. President replied that it was the committee's intention to eventually sell off the "British Guinea" and "Forgeries" collections but that no time-frame had been set for this. Noted too, that the GB Collection had already been sold to an English buyer for a satisfactory price.

A vote of thanks was proposed (J Sheppard/D Reynolds) to the outgoing committee for their work during the past year. Passed with acclamation.

MEETING CLOSED at 7.55pm.

PRESIDENTS REPORT

For year from May 2016 to April 2017

The year has had its challenges at least for the Executive Committee, but also for the hobby as a whole. Shortly after the last AGM our Secretary Jim Robb resigned prior to undergoing some medical treatment and so the Executive has operated with members stepping in to fill the role. We certainly missed Jim's efficiency. The Committee is therefore currently without a Secretary and has none of the 4 available committee member positions filled. Additional volunteers to assist in running the society are needed to help spread the load. Please consider allowing your name to go forward at the election of officers.

As far as the hobby on the whole we are facing a worldwide trend of reduced services from postal authorities, less "real physical" mail and an aging collector population. There are lots of predictions globally that most Societies won't exist in the next decade or two. The challenge for us as a Society is to buck the predictions and ensure we remain with a solid membership base and have activities and services that are relevant to our members. On the one hand we need to ensure we remain relevant to our current members, but we also will probably need to make changes to get in the next generation and be relevant to them. We need to have a crystal ball to anticipate what that next generation will be interested in and collect.

Will the next generations collect? I would suggest they will, but what they collect will be another story. Trade cards are still popular with one supermarket chain having been active in that market, and I note with the start of a new Super rugby season, cards of the Crusaders are available around the town. In scouting that I am also involved with, the collecting of badges is still hugely popular. While once you needed an import licence to bring woven badges in from overseas, now they are mass produced, cheap (relatively) and easy to get. Some enthusiastic collectors have even produced their own badge as a form of business card. Collecting seems to be a human preoccupation.

So that leads to our philatelic collecting. There are two streams as far as I can see. The first being what we collect ourselves and do we just collect stamps or do we dabble into other things. I do. Our collections are personal and no-one can tell us what right or not right to collect and so we can easily mix and match collecting genres. The second stream is exhibiting and when you enter that field there are understandably rules to follow. Those rules do change and new genres get introduced. Postcards, and more recently ephemera, have been introduced, both championed by our Patron. Are these perhaps the signals as to where the hobby is heading, no longer specialised philatelically but a society of collectors? This is of course not strictly a report of the previous

year, but is an issue we need to consider as a Society, particularly given that we are starting to be in a position where those available to run the Society are also getting fewer as noted in the first paragraph of this report.

The "Captain Coqk" newsletter remains one of our most important elements in providing a reason to belong to this Society. We need to record our special thanks to those members who write articles, to member dealers who continue to advertise, and Stephen Jones for continuing to edit and produce the publication.

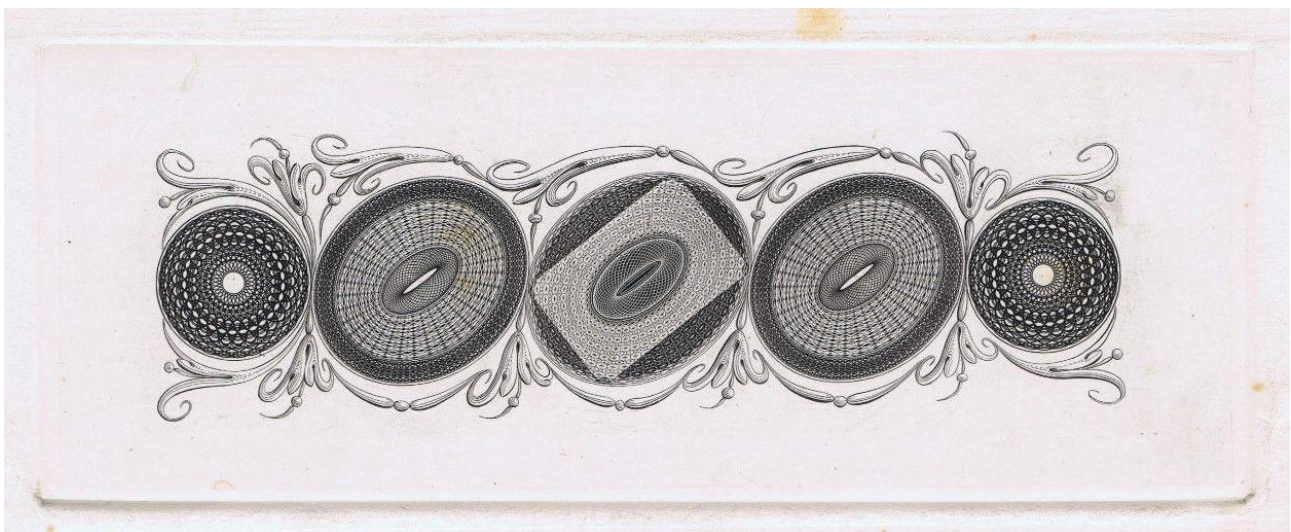
The Library has seen some development with the arrival of Gerald Elliott's library as the largest of a good number of donations of material made during the year. It resulted in a new low row of shelving having been organised to form a reference only area for items not able to be borrowed. Additionally, the Society was successful in applying to host/run a National Philatelic Exhibition under the auspices of the library. This will likely take place in September 2017 and if successful may continue on a biennially. Even without this additional activity, the Library Team of Robert Duns, John Sheppard, Malcolm Westgarth and I continue to sort, bind, catalogue, and attempt to answer queries.

Circuit Books, continue to be circulated which are supervised by Tony Stockley, ably assisted by David Reynolds and Winston Groves.

Finally, all these functions are overseen by our Executive Committee. In the background we have the officers of the Society working away keeping minutes and letters moving, bills paid, competitions and speakers organised, newsletters printed and posted. Our thanks to the full team needs to be recorded and hopefully the membership as whole will endorse their efforts by re-electing them all. In addition to the routine administration we also have an Audit Committee who we seem to give little actual time to do their work, just before this meeting. Nevertheless, it is an important function as a separate review to ensure our money is all correctly and competently managed.

As a look into the immediate future, the Society is organising and hosting the 15th New Zealand Philatelic Literature Exhibition in September of this year. A major task for this is to get material to enter the exhibition. We ask all members who belong to other specialist or general societies that produce monographs or regular journals to consider entering them. A Prospectus is available on our website.

Perkins Bacon Engine Turning Sample



The above is a sample of engine turning machining similar to that used by Perkins Bacon for the background design of the Chalon Heads issue.

Stephen Jones

THE CHRISTCHURCH (NZ) PHILATELIC SOCIETY INC
STATEMENT OF FINANCIAL PERFORMANCE
FOR THE YEAR ENDING 31 DECEMBER 2016

2015	INCOME	2016
11,198	Subscriptions	9,883
926	Exchange Branch Commissions	616
	Other	
103	Raffles	323
3,470	Advertising	3,200
680	Donations	600
10,213	Interest	12,715
59,805	Collection sales	0
119	Library	171
<u>92</u>	Miscellaneous	<u>153</u>
<u>74,482</u>		<u>17,162</u>
 <u>86,606</u>	 Total Income	 <u>27,661</u>
	Less Expenses	
3,803	Printing and Stationery	4,720
2,468	Postage and P O Box Rental	1,481
1,300	Officers Expenses	1,300
7,400	Rent	7,400
585	Federation Levy	587
276	General Expenses	153
50	Society and Interclub Competitions	80
394	Insurance	380
265	Meeting Expenses	583
447	Federation Delegate Travel	498
258	Internet	1,090
1,189	Depreciation & Write-off	0
200	Donations	200
<u>2,418</u>	Library	<u>3,360</u>
<u>21,053</u>		<u>21,832</u>
 <u>65,553</u>	 Surplus/(Deficit) for year	 <u>5,829</u>

THE CHRISTCHURCH (NZ) PHILATELIC SOCIETY INC
STATEMENT OF FINANCIAL POSITION
AS AT 31 DECEMBER 2016

<u>2015</u>		<u>2016</u>
	<u>Current Assets</u>	
3,120	Westpac Cheque account	1,683
1,788	Savings account	29,473
0	Paypal	436
<u>301,857</u>	Westpac Term Deposit	<u>281,057</u>
<u>306,765</u>		<u>312,649</u>

	<u>Investments</u>	
3,000	Advance to Philatelic Properties	3,000
<u>150,000</u>	Shares in Philatelic Properties	<u>150,000</u>
<u>153,000</u>	Total Investments	<u>153,000</u>
 <u>459,765</u>	<u>Total Assets</u>	 <u>465,649</u>
	<u>Current Liabilities</u>	
<u>3,174</u>	Exchange Branch Suspense	<u>3,229</u>
<u>3,174</u>		<u>3,229</u>
<u>3,174</u>	<u>Total Liabilities</u>	<u>3,229</u>
 <u>456,591</u>	Excess of assets over Liabilities	 <u>462,420</u>
 355,268	Members Funds at beginning of year	 456,591
65,533	Surplus/(Deficit) for year	5,829
20,936	Transfer from Library Reserve	0
<u>14,834</u>	Transfer from Building Reserve	<u>0</u>
 <u>456,591</u>	Excess of Assets over Liabilities	 <u>462,420</u>
 20,936	Library Reserve at beginning of year	 0
0	Income for the year	0
0	Expenses for the year	0
 (20,936)	Transfer to Members' Funds	 <u>0</u>
<u>0</u>		<u>0</u>
 14,834	Building reserve at beginning of year	 0
0	Interest received	0
<u>(14,834)</u>	Transfer to Members' Funds	<u>0</u>
<u>0</u>		<u>0</u>
 <u>456,591</u>		 <u>462,420</u>

Karen Jeffrey, Treasurer

Review Report to Christchurch (NZ) Philatelic Society Incorporated

I have reviewed the financial statements of Christchurch (NZ) Philatelic Society Incorporated for the year ended 31 December 2016.

A review is limited primarily to enquiries of Society personnel and analytical review procedures applied to financial data and thus provides less assurance than an audit. I have not performed an audit and, accordingly, I do not express an audit opinion.

Based on my review, nothing has come to my attention that causes me to believe that these financial statements do not give a true and fair view the financial position of Christchurch (NZ) Philatelic Society Incorporated as at 31 December 2016, and its financial performance and cash flows for the year then ended.

Murray Taege
138 Totara Street, Christchurch 8041
March 15, 2017

The 1955 CAUTION Labels

Introduction

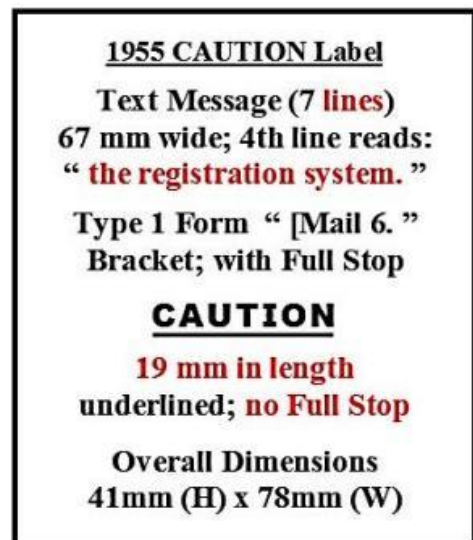
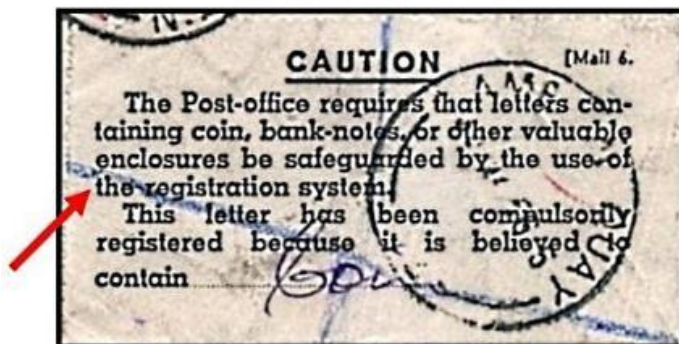
Previous articles in this series have described five variations of CAUTION Labels used by the New Zealand post offices during the King George VI period ⁽¹⁻⁴⁾.

This article describes the 1955 CAUTION Label which, on information presently to hand, seems to have first appeared in the early Queen Elizabeth II period. The Earliest Known Usage date of the 1955 CAUTION Label of three examples examined to date is 13 June 1955.

The 1955 CAUTION Label

The 1955 CAUTION Labels continued to feature the Post Office Form designator " [Mail 6. " in the upper right hand corner of these labels. Of the four possible Form designators identified in earlier articles, the 1955 CAUTION Labels examined to date have only been found with the Type 1 Form designator, that is, with the Bracket and the Full Stop.

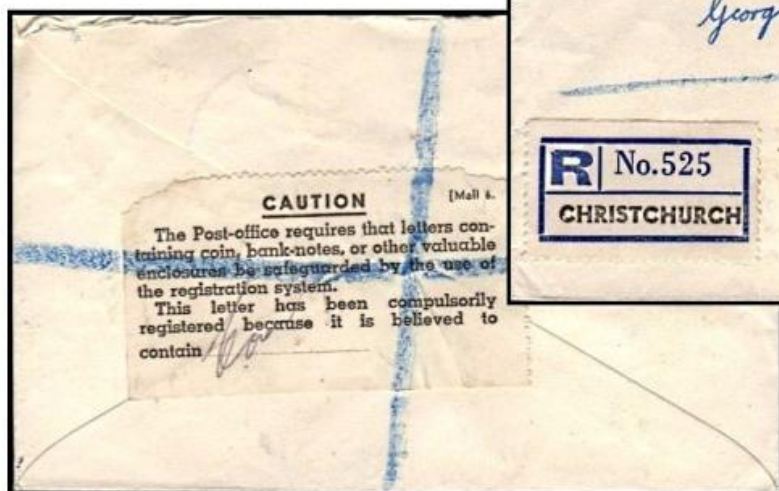
The 1955 CAUTION Label is characterized by two single sentence paragraphs printed over seven lines in total vs. six in the case of the 1948 Labels. The message itself is the same as that found on the 1948 Label but with expanded spacing between the words in the second paragraph now printed in three lines (vs. two). The overall dimensions of the 1955 Label are approximately the same as those of the 1948 Labels. Important dimensional characteristics of the 1955 Label are shown below.



The 1955 CAUTION Label illustrated overleaf shows the currently Earliest Known Use of these labels, being postmarked 10 JE 55 in Dipton, Southland and compulsorily registered upon receipt in Christchurch 13 JE 55. The word "Coin" was written in manuscript on the label on the reverse of the letter. As the letter was subject to compulsory registration, the recipient was required to pay 1s., that is, double the ruling 6d. registration fee at the time.

The 1955 CAUTION Label

Courtesy of the
Jeff Long Collection



Earliest Known Use of the 1955 CAUTION Label (Type 1 - Bracket and Full Stop)
affixed to a letter containing a coin - Postmarked 13 JE 55 within Christchurch

Earliest Known Use of the 1955 CAUTION " Mail 6 " Labels

	Postmark	Route
Type 1 (Bracket & Full Stop)	13 June 1955	Registered in Christchurch (ex Dipton)
Latest Known Date	22 Oct 1959	Lyttleton to Christchurch

...to be continued

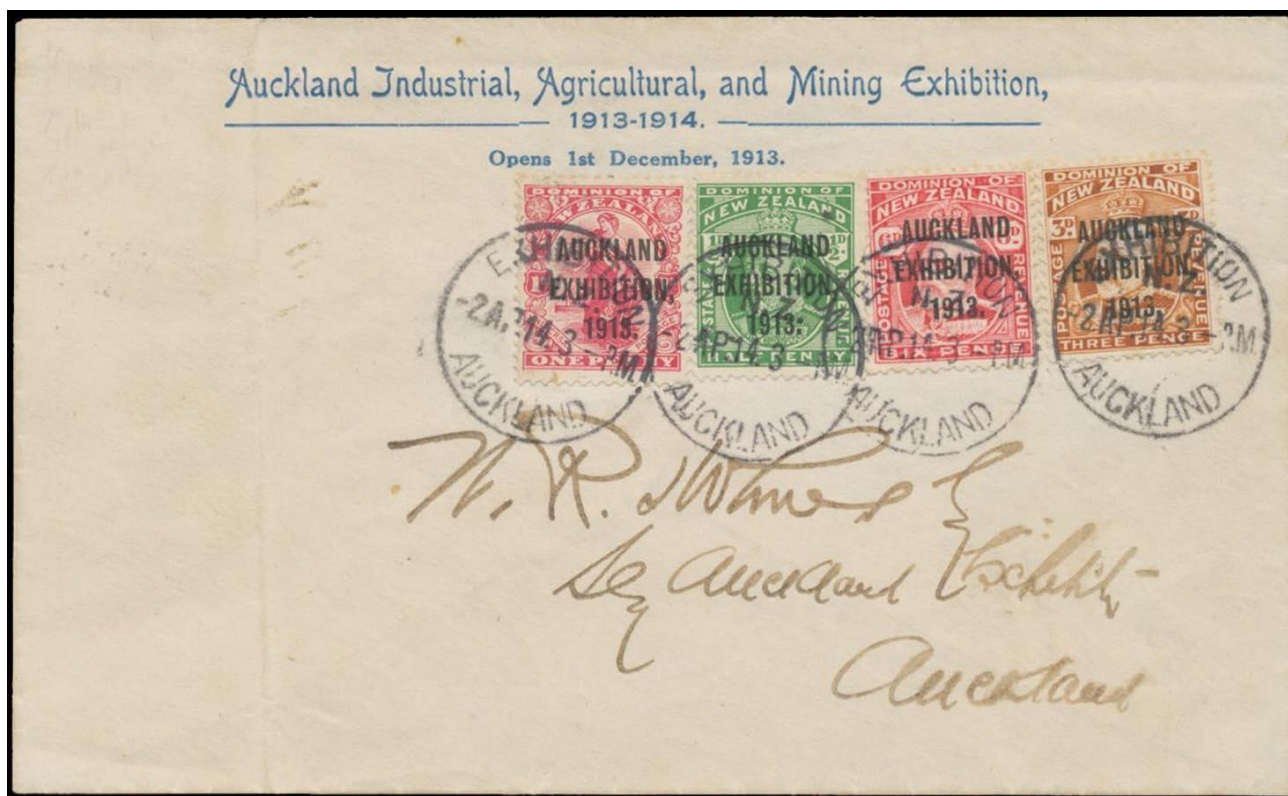
Acknowledgements: The author wishes to acknowledge the contributions of Herb Cowley, Jeff Long, Harold Waite, Paul Wales and Richard Wooders have graciously provided permission for information and images from their respective collections or websites to be incorporated into the database assembled for this series of articles on CAUTION Labels

References:

- (1) SF Prest "The 1932 CAUTION Labels" CAPTAIN COQK, Newsletter of the Christchurch (NZ) Philatelic Society, Whole Number 776, Vol 44, No. 7, 2016 pp 96 - 98
- (2) SF Prest "The 1938 CAUTION Labels", *ibid*, Whole Number 777, Vol 44, No. 8, 2016 pp 109 - 110
- (3) SF Prest "The 1940 CAUTION Labels", *ibid*, Whole Number 780, Vol 44, No. 11, 2016 pp 148 - 149
- (4) SF Prest "The 1946 & 1948 CAUTION Labels", *ibid*, Whole Number 781, Vol 45, No. 1, 2016 pp 11 -14
- (5) SF Prest "1932 CAUTION Labels - Earlier Use Discovered", *ibid*, Whole Number 782, Vol 45, No. 2, 2016 pp 31

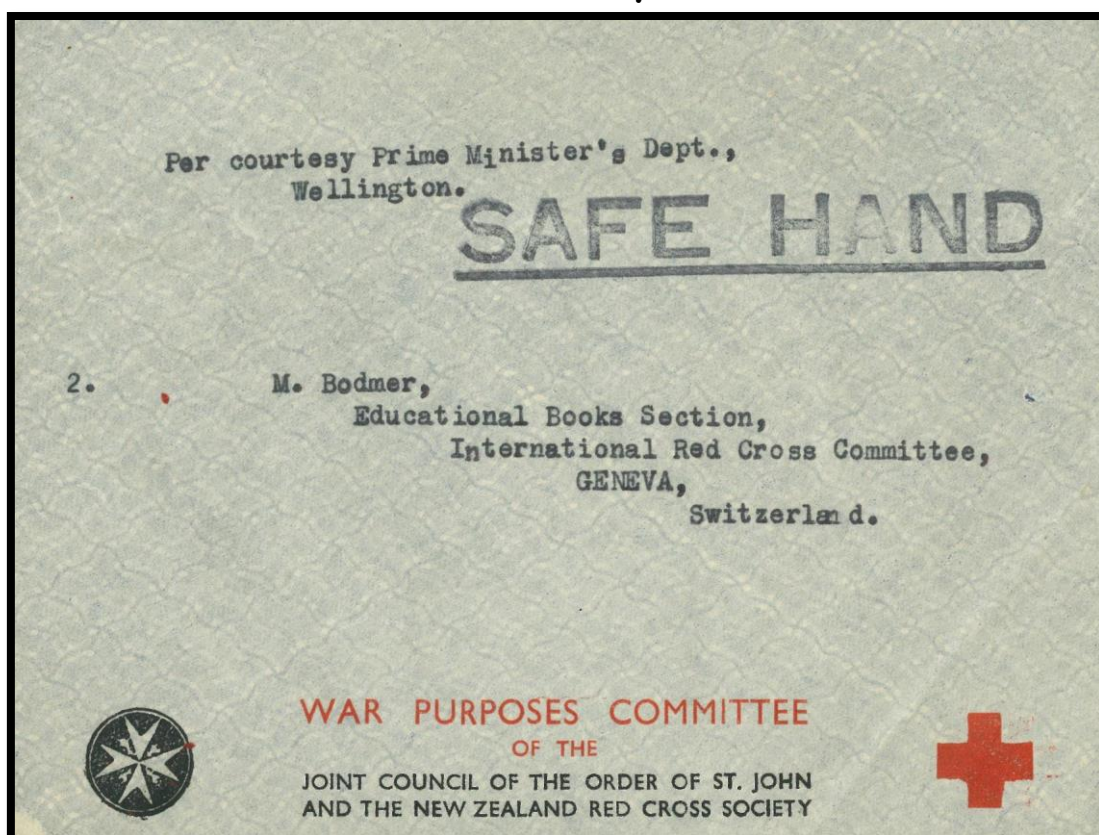
Stephen Prest

1913 Auckland Exhibition Cover



Seen in a recent auction of exhibition related philatelic items held in Australia, a very rare cover with printed advertising promoting the 1913 Auckland Exhibition. Stephen Jones

1940's Mail Carried By "Safe Hand"



The above cover appears to be an example of mail carried overseas from New Zealand in a diplomatic pouch. It is unstamped and, other than the "Safe Hand" marking, has no postal markings on either the front or reverse.

Stephen Jones



**Phone: (03) 579 5650. Fax: (03) 579 9894.
PO Box 5086, Springlands, Blenheim 7241.**

The web site is up and running allowing orders to be placed directly once you have registered. Currently there are over 12,000 stamps, covers, postcards etc on the site and all are illustrated.

Email us if you have any problems registering or navigating around the site.

There is a search facility allowing you to search for your Interests. e.g. Entering the word 'Railway' brings up around 200 different items.

Website categories include:

- NZ definitive issues from Full Face Queens to the current issues.
- NZ Commemoratives from the 1906 Christchurch Exhibition onwards.
- NZ Health and Christmas issues.
- Booklets.
- Air mail stamps and covers.
- Life Insurance.
- Postage Due and Express stamps and covers.
- Postal fiscals and Revenue stamps.
- Cinderellas.
- Various miscellaneous issues and covers. Postal fiscals and Revenue stamps.
- New Zealand Postal History.
- New Zealand Postal Stationery.
- Antarctic stamps, Postcards and Postal History.
- Various British Commonwealth and Foreign Country's stamps and covers.

Below is a sample of what you can find on the site:



When did you last see a postally used block of six 5/- Mount Cook?
Just one of the many scarce items available for sale on the Classic Stamps website.

PUBLIC & POSTAL AUCTIONS STAMPS & POSTAL HISTORY

Each year we offer thousands of items for sale via our Public & Postal Auctions and Direct Sale Lists. **Phone, email or visit our web site for more information.**

- NEW ZEALAND STAMPS
- COLLECTIONS & ACCUMULATIONS
- ESTATE LOTS
- MARITIME MAIL
- ERRORS
- WORLD STAMPS
- FULL FACE QUEEN COVERS
- VARIETIES



2017 Colour Catalogue of New Zealand Stamps



- Colour Photos & Prices for every New Zealand Stamp from 1855-2017
- Many Price Changes

Phone, email or visit our web site for more information.

PHONE +64 9 522 0311

FAX +64 9 522 0313

hello@aucklandcitystamps.co.nz

www.aucklandcitystamps.co.nz

1 Ngaire Ave Newmarket | PO Box 99988 Newmarket Auckland 1149 New Zealand

Dealers in fine stamps
of the World, Specialists
in New Zealand and the
Pacific Islands.

Auckland City Stamps

Licensed Auctioneers

EST. 1974

